

# GWCI

An essential link to economic & durable  
development in Canada

May 2024



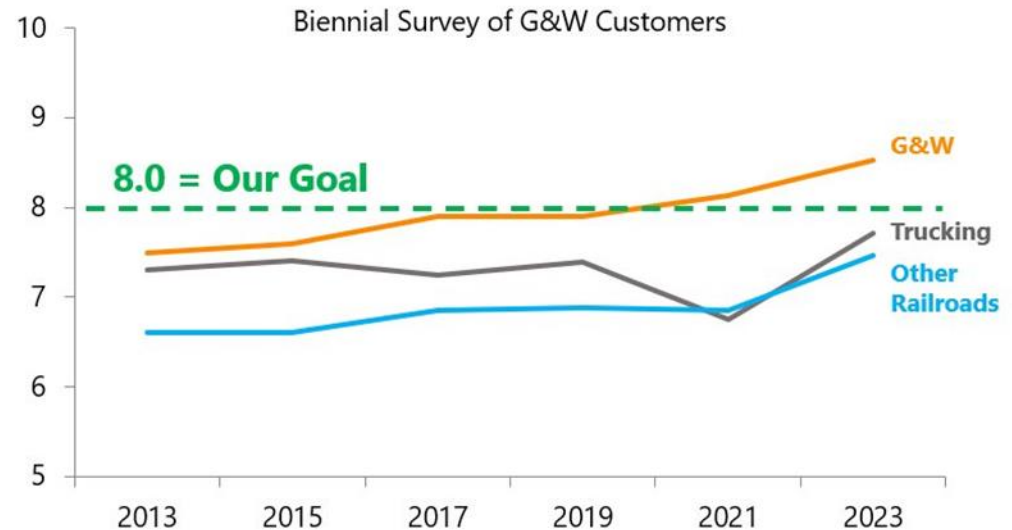
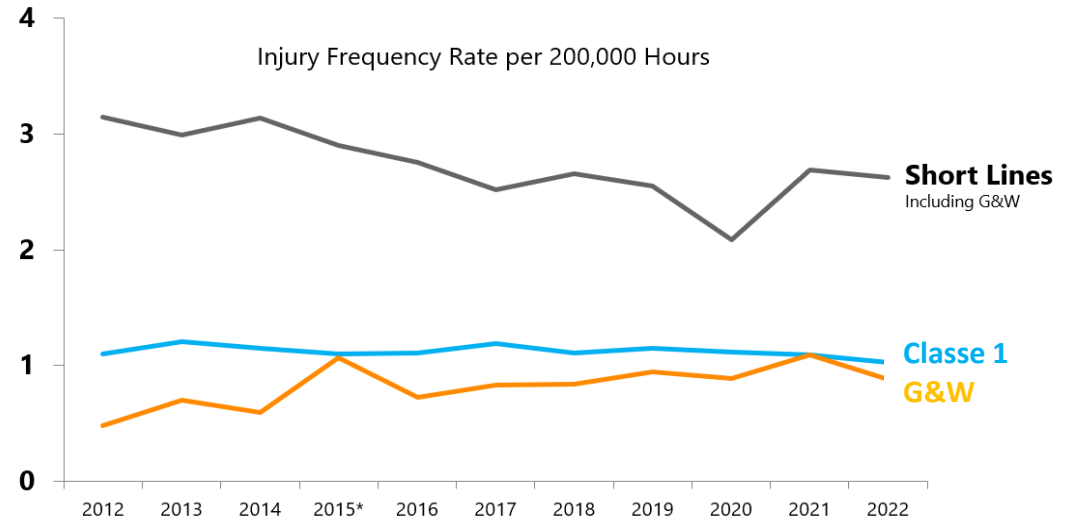
# Genesee & Wyoming Inc.

## Who Are We?

## Our Core Purpose

To be the **safest and most respected** transportation service provider in the World

### Safety & Service Performance



# Genesee & Wyoming Inc:

## An important player in the rail Industry

- Genesee & Wyoming Inc. Is the largest association of shortlines in North America.
- G&W operates in 44 states, 4 Canadian provinces and numerous European ports.
- The original Genesee and Wyoming Railroad was 14 miles in upstate NY serving one customer that we still serve today. Brookfield Infrastructures acquired G&W in 2019.



### EMPLOYEES

7 300 in North America and Europe



### TRACK MILES

116 Railroads and 13 000 track miles



### TRANSPORT

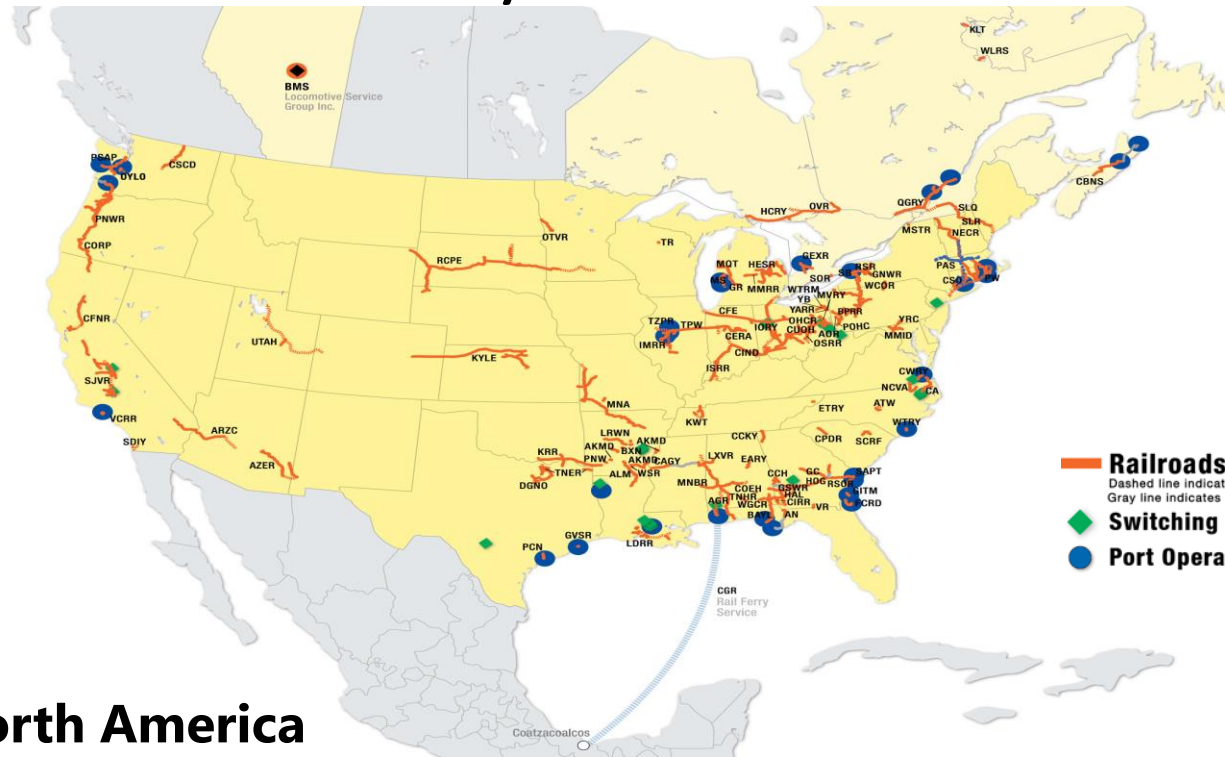
1 230 locomotives moving 2.4 million carloads



### CLIENTS

3 000 customers and more than 40 ports and mines

# G&W Today

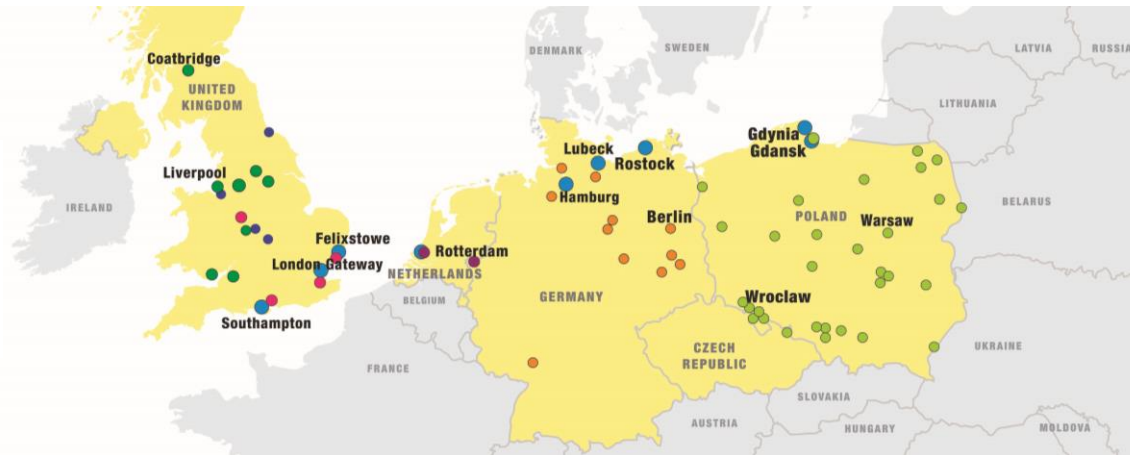


## North America

- 116 Railroads
- 7,300 Employees
- 3,000 Customers
- 13,000 Track Miles
- 2.4 Million Carloads

## UK/Europe

- Served Ports
- Freightliner Intermodal Terminals (Owned)
- Pentalver Intermodal Terminals
- Freightliner Served Intermodal Terminals (Third-Party)
- Freightliner DE
- Freightliner PL
- Rotterdam Rail Feeding



# Genesee & Wyoming In Canada

10 Railroads  
(Ontario, Quebec,  
NS and Terre-  
Neuve-Labrador) +  
2 mechanic shops

470 employees

1,400 miles of rails  
1,500 railcars

88 locomotives

Head Quarter  
located in  
Montreal, PQ

100 000+

Railcars shipped in 2023



# Shortlines' Economic Challenges

## Maintenance Costs

Shortlines reinvests between 60% and 98%+ of its gross operating margin annually in its infrastructure to keep it safe, compliant and functional.

## Climate Change

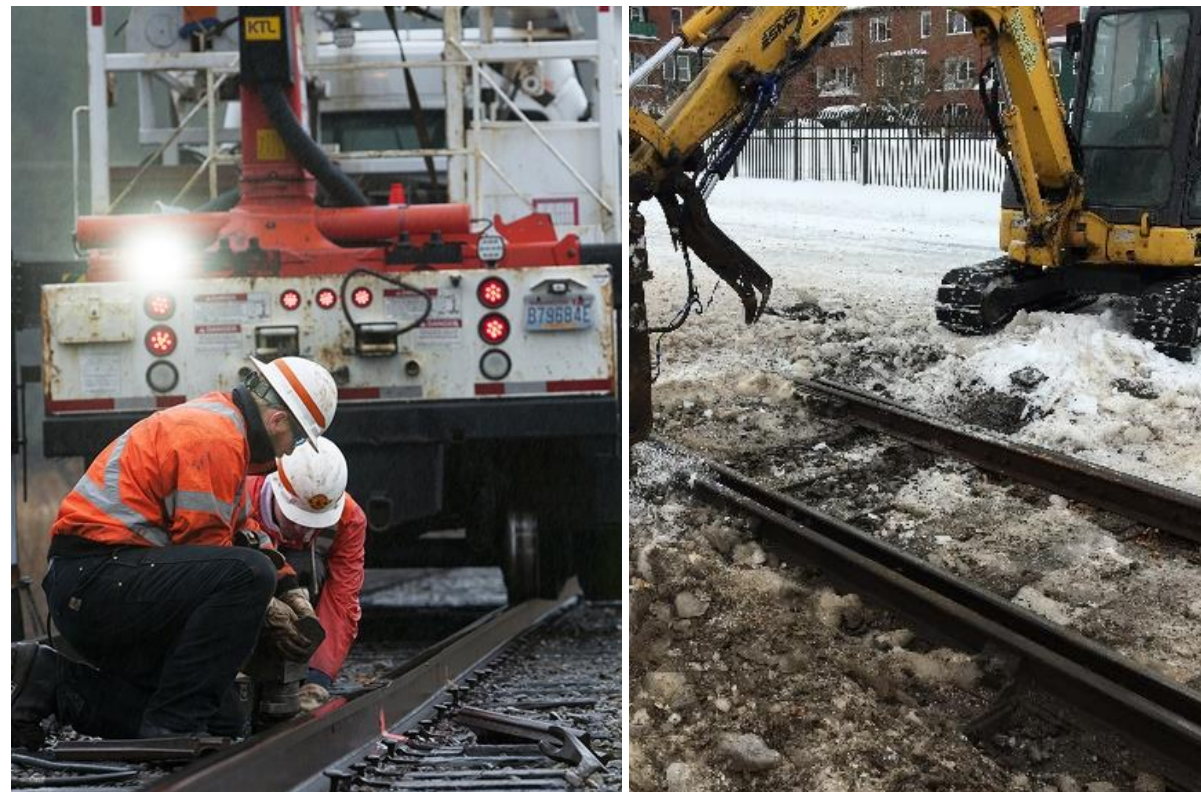
The precariousness of railway infrastructure is accentuated by climate change, which is not adapted to the current reality.

## Competitiveness

The CFIL is in direct competition with the trucking sector, which is subsidized and benefits from publicly funded infrastructure.

## Workforce training

There is no workforce training program in the rail industry. Railways are responsible for the training of their employees, which requires significant investment

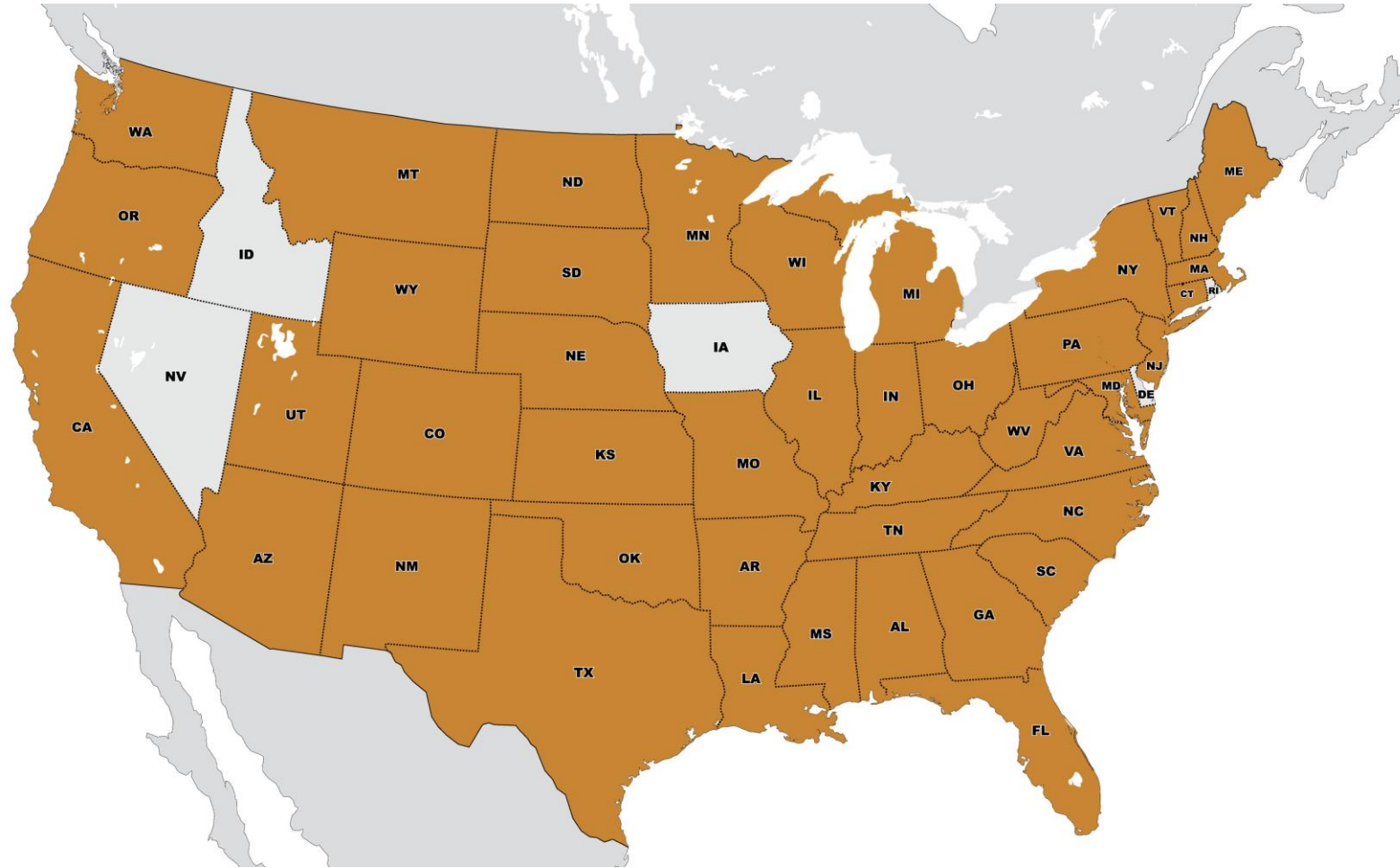


# Thank you

Thierry Lysiak  
Vice-President Business Development  
Thierry.lysiak@gwrr.com  
514-773-2219



# We operate in more U.S. states than any other railroad



# states

44

28

23

23

22

19

12